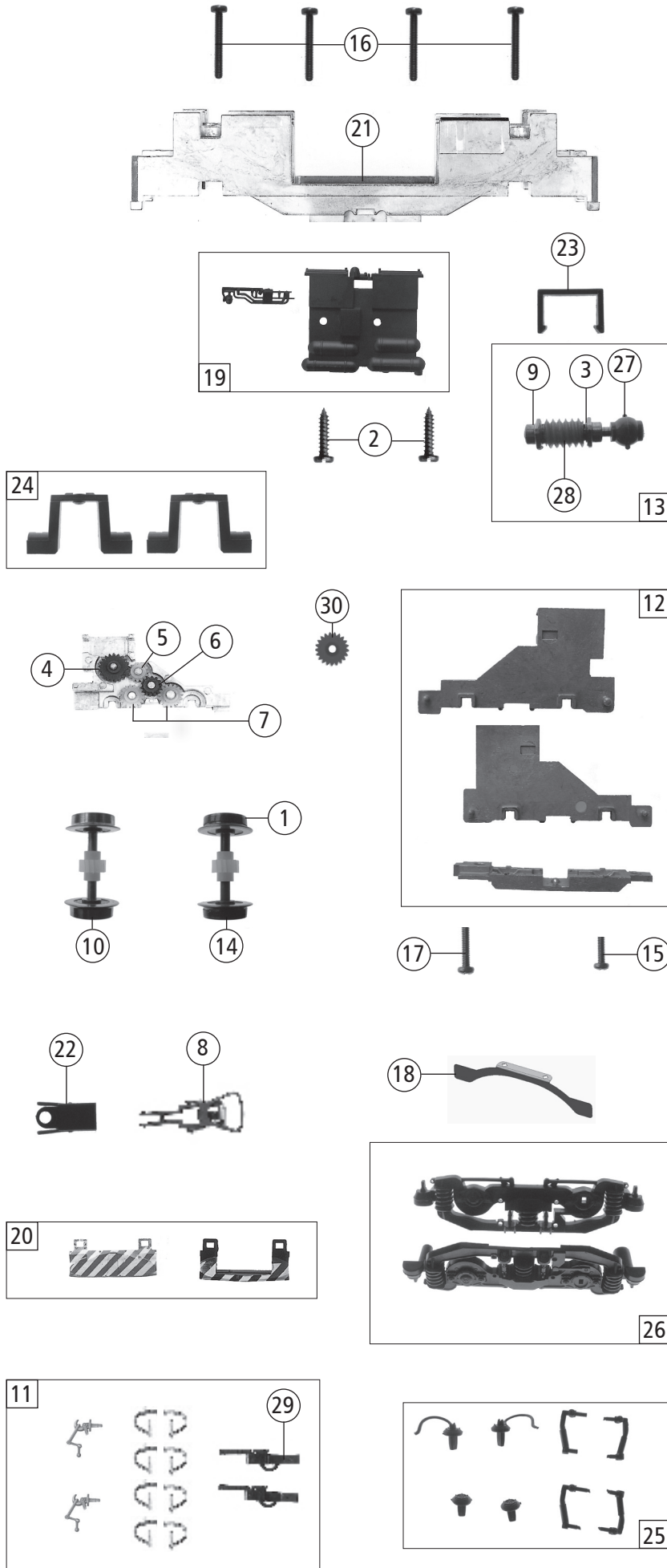


Pos. Nr. Pos.no.	Beschreibung Description	Art.-Nr. Art.no.	Preisgruppe Price bracket
<b>73002</b> FS D.343 =			
<b>73003</b> = 🔊			
1	Gehäuse kpl. Betr. No. D.343.2015 Body assembly Loco No. D.343.2015	148616	34
2	Motor Motor	85143	28
3	Schraube M 2X4 mm Screw	85670	3
4	Kardanschale Cardan bearing	87015	4
5	Kardanwelle Cardan Shaft	87012	5
6	Lokpfeife Loco whistle	88002	6
7	E-Lokführer Locomotive driver	89732	6
8	Führerstand lack. Drivers cab	138434	6
9	Brückenstecker Jumper	133241	10
10	Adapter Adapter	101367	3
11	Kohlebürste Carbon brush	89743	6
12	Platine kpl. Printed circuit assembly	138432	26
13	E-Lokführer seitlich Locomotive driver collateral	115098	6
14	TS - Scheinwerfer Lichtleiter Linse Part srt headlight - lightconductor	138437	8
15	Scheinwerferring Headlight ring	125719	6
16	Auspuffblech Exhaust pipe plate	134868	10
17	TS - Gehäuse Part set for body	125740	6
18	Puffer Buffer	114440	3
19	Schraube 2.2X9.5 mm Screw	85808	3
20	FS - Tafel FS - plate	138435	5
21	Fenstersatz Window set	134869	10
22	Handgriffesatz Handrails set	138439	8
23	Kardanschale Cardan bearing	87014	3
24	TS - Gehäuse Part set body	113310	6
25	Bürstenfeder Brush spring	114197	3
26	TS - Lichtabdeckung Part set - light cover	138344	6
27	Kontaktfeder lang Contact spring long	116876	3
<b>Sound</b>			
28	Sounddecoder Sounddecoder	129300	39
29	Lautsprecher Loudspeaker	129524	13
30	LS-Box LS-Box	137427	6
31	Platine kpl. m.LED-Pl.+Lautsprecher Printed circuit w. LED-pr. circ. + loudspeaker	138440	30

Änderungen in Konstruktion und Ausführung vorbehalten  
We reserve the right to change the construction and specification



Pos. Nr. Pos.no.	Beschreibung Description	Art.-Nr. Art.no.	Preisgruppe Price bracket
73002	FS D.343	=	
73003		=	🔊
1	Hafringsatz 10Stk.10,3-12,8mm Set with traction tires	40069	---
2	Schraube M2,2x6,5 mm Screw	111304	3
3	Beilagscheibe 2,1x4 / 0,2 mm Washer	86108	3
4	Achszahnrad Z-21 rechts Axis gear Z-14	86401	3
5	Zahnrad Z-14/M-0.4 rechts Gear Z=14	86403	3
6	Zahnrad Z-14/M-0.4 links Gear Z=14	86404	3
7	Zahnrad Z-17/M 0.4 links Gear Z=17/M 4.4 left	86406	3
8	Standard Kupplung standard coupler	89246	6
9	Lager für Schneckenachse Bearing for Worm axle	89749	6
10	Radsatz m. Zahnrad o. Hafring Wheelset with gear without traction tire	114437	11
11	Zurüstbeutel Bag with accessories	138438	10
12	Getriebesatz Gear parts set	138343	13
13	Schneckensatz Worm set	113308	13
14	Radsatz m. Hafringen+Zahnrad Wheelset with gear with traction tires	114438	12
15	GF-Schraube 1,6x6 mm GF-Screw	114836	3
16	GF-Schraube M2x16 mm GF-Screw	115094	3
17	GF-Schraube M1,6x12 mm GF-Screw	115138	3
18	Radkontakt Wheel contact	125353	4
19	TS - Batteriekasten+Steckteil Part set - battery box + plug-in part	126910	8
20	Zurüstbeutel Bag with accessories	126100	10
21	Grundrahmen Main frame	126086	17
22	Kupplungskammer Coupling chamber	114434	3
23	Spange Clamp	95239	3
24	DG-Bügel lackiert 1+2 Bogie clip coated	125738	12
25	Steckteilesatz f. Blenden Part set for bogie	125737	6
26	TS - Blende Part set bogie frame	125736	8
27	Kardankugel Cardan ball	87013	3
28	Schnecke Wormgear	86701	6
29	Kurzkupplung-Vorentkupplung Short coupling- pre-uncoupling	115550	6
30	Achszahnrad Z=21 Axle gearwheel	86401	3